

**Canon**

**Wireless Remote Control**

**BR-E2**

Advanced User Guide

**EN**

# Contents

---

Introduction. . . . .	3
Instruction Manuals. . . . .	4
About This Guide. . . . .	5
Safety Instructions. . . . .	6
Cautions for Using the Remote Control. . . . .	8
Part Names. . . . .	9
Preparation and Basic Operations. . . . .	11
Connecting the Remote Control and Camera. . . . .	12
Shooting Still Photos. . . . .	15
Movie Recording. . . . .	17
Operating the Zoom. . . . .	19
Setting Exposure Compensation. . . . .	21
Remote Function Buttons. . . . .	23
Replacing the Battery. . . . .	24
Reference. . . . .	26
Specifications. . . . .	27
Trademarks and Licensing. . . . .	28
Before Disposal. . . . .	29
Regulations. . . . .	30

# Introduction

---

The Wireless Remote Control BR-E2 is a wireless remote controller that is compatible with Bluetooth® low energy technology (hereafter "Bluetooth").

Connecting the remote controller to a Canon digital camera allows the camera to be operated wirelessly.

\* For information on the supported cameras, refer to the Canon Web site, etc.

---

## Read before use

To avoid shooting problems and accidents, first read the [Safety Instructions](#). Also read this Advanced User Guide carefully to ensure correct use.

The microphone is not dustproof or waterproof. Do not allow rain, sand, dust, etc. to enter the microphone.

## Also refer to your camera's instruction manual

Before use, read this guide and your camera's Advanced User Guide to familiarize yourself with operations.

- [Instruction Manuals](#)
- [About This Guide](#)
- [Safety Instructions](#)
- [Cautions for Using the Remote Control](#)
- [Nomenclature](#)



The included Instruction Manual provides basic product information.

- **Advanced User Guide**

Complete instructions are provided in this Advanced User Guide.  
For the latest Advanced User Guide, refer to the following website.

<https://cam.start.canon/A011/>



## About This Guide




---

 [Icons in This Manual](#)

 [Basic Assumptions](#)

### Icons in This Manual

---

	Links to pages with related topics.
	Warnings to prevent potential problems during operation.
	Supplemental information.

### Basic Assumptions

---

- In this manual, wireless remote controllers are referred to as “remote controls.”
- Explanations assume that the camera and the remote control are turned on.
- Explanations assume that the camera and the remote control are already paired.
- The buttons and symbols used in this manual are the same ones used on the camera and the remote control.
- Instructions apply to all settings (such as menu settings and Custom Functions) set to defaults.

## Safety Instructions

---

Be sure to read these instructions in order to operate the product safely.  
Follow these instructions to prevent injury or harm to the operator of the product or others.



### WARNING

Denotes the risk of serious injury or death.

- Keep the product out of the reach of young children.
- Keep batteries out of the reach of children.
- The battery is dangerous if swallowed. If swallowed, seek immediate medical assistance.
- **PRODUCT CONTAINS BUTTON/COIN CELL BATTERY**  
Button/coin cell batteries are hazardous and must be kept out of reach of children at all times, whether new or used.  
These batteries can cause severe or fatal injuries in 2 hours or less if swallowed or placed inside any part of the body.  
If it is suspected a button/coin cell battery has been swallowed or placed inside any part of the body, seek medical attention immediately.
- Use only power sources specified in this instruction manual for use with the product.
- Do not disassemble or modify the product.
- Do not expose the product to strong shocks or vibration.
- Do not touch any exposed internal parts.
- Stop using the product in any case of unusual circumstances such as the presence of smoke or a strange smell.
- Do not use organic solvents such as alcohol, benzene or paint thinner to clean the product.
- Do not get the product wet. Do not insert foreign objects or liquids into the product.
- Do not use the product where flammable gases may be present.  
This may cause electric shock, explosion or fire.
- Observe the following instructions when using commercially available batteries or provided battery packs.
  - Do not heat batteries/battery packs or expose them to fire.
  - Do not expose the terminals to dirt or let them come into contact with metallic pins or other metal objects.
  - Do not use leaking batteries/battery packs.
  - When disposing of batteries/battery packs, insulate the terminals with tape or other means.  
This may cause electric shock, explosion or fire.
  - If a battery/battery pack leaks and the material contacts your skin or clothing, flush the exposed area thoroughly with running water. In case of eye contact, flush thoroughly with copious amounts of clean running water and seek immediate medical assistance.
- Do not leave the product in places exposed to extremely high or low temperatures.  
The product may become extremely hot/cold and cause burns or injury when touched.

## Caution

Follow the cautions below. Otherwise physical injury or property damage may result.

- Do not leave the product in places exposed to extremely high or low temperatures. The product may become extremely hot/cold and cause burns or injury when touched.

## **Cautions for Using the Remote Control**


---

If remote control operation takes time or fails, or if other problems occur, try the following corrective actions.

### **Distance Between the Camera and This Product**

The operating distance of this product is approx. 5 m/16.4 ft. in all directions. Remote operations may not be possible if this product is too far away from the camera. In such a case, perform remote control operations after bringing this product closer to the camera.

### **Obstructions That Impede the Communication of This Product**

- The operating distance of this product may become shorter if people or other obstructions are between this product and the camera.
- The operating distance of this product may become shorter if operations are performed with your finger covering the <  >.

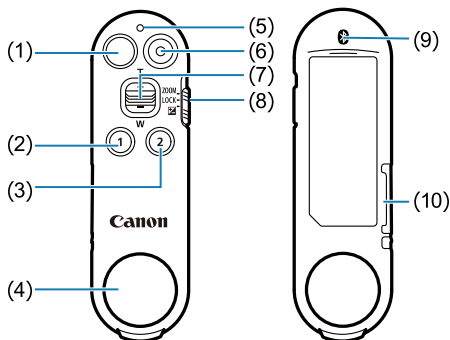
### **Radio Wave Interference in 2.4 GHz Band**

This product performs Bluetooth communication using radio waves in the 2.4 GHz band. For this reason, remote control operation may take time or fail if there are electronic devices operating on the same frequency band nearby.

- Electronic devices operating on the same frequency band includes Wi-Fi devices, smartphones, Bluetooth devices, microwave ovens, cordless telephones, and similar devices.
- If radio wave interference occurs between a nearby electronic device and this product, stop using the electronic device or move further away from the devices to use this product.
- Even if there are no electronic devices nearby, radio wave interference may occur between this product and an electronic device used in a nearby building or car. In such a case, the above condition may improve if you leave this product idle for a while and then operate it again.

## Part Names

### [Indicator Status](#)



---

(1) Release button

---

(2) <1> Remote function button 1

---

(3) <2> Remote function button 2

---

(4) Strap hole

---

(5) Indicator

---

(6) Movie shooting button

---

(7) Zoom/exposure compensation lever


During zoom: < **T** > Telephoto/< **W** > Wide-angle

During exposure compensation: < **+** > Positive compensation/< **-** > Negative compensation

---

(8) < **ZOOM/LOCK/☒** > Zoom/lock/exposure compensation switch

---

(9) <  > Bluetooth logo

---

(10) Battery holder

---

 **Note**

- The product does not come with a strap.

## Indicator Status

---

Indicator	Status
Lights Up	Pairing complete, Firmware update complete, AF achieved, Started bulb exposure, Started movie recording, Still photo shooting complete
Blinking	Start pairing, Firmware update in progress, Stopped bulb exposure, Stopped movie recording
Rapid Blinking	Error, AF not possible

## Preparation and Basic Operations

---

This chapter explains how to connect to the camera and basic operations.

- [Connecting the Remote Control and Camera](#)
- [Shooting Still Photos](#)
- [Movie Recording](#)
- [Operating the Zoom](#)
- [Setting Exposure Compensation](#)
- [Remote Function Buttons](#)
- [Replacing the Battery](#)

# Connecting the Remote Control and Camera

---

[☑ Checking Connection Information](#)

[☑ Deleting Connection Information](#)

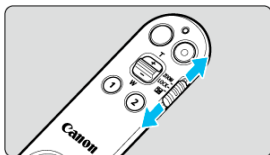
Connect the remote control and camera using the Bluetooth function.

---

## 1. Set the camera to the pairing standby mode.

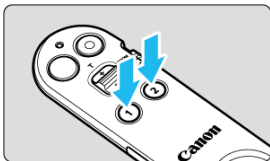
- Select [**Connect to Wireless Remote**] on the camera's menu screen.  
For more details, refer to the camera instruction manual.

## 2. Set the remote control.



- Set the zoom/lock/exposure compensation switch to a position other than <LOCK>.

### 3. Connect the remote control to the camera.



- Press and hold button <1> and button <2> simultaneously for at least 3 seconds. Pairing will begin.
- When pairing is completed, the indicator lights up once. The remote control is registered in the camera and a message is displayed on the LCD monitor.
- If pairing fails, the indicator blinks rapidly. In that case, press buttons <1> and <2> again.

#### Caution

- Pairing information can be registered for up to five camera models. If five camera models have already been paired and another unregistered camera model is paired, the pairing information for the new model will overwrite the pairing information for the first model that was registered.
- The remote control can only connect to one camera at a time. When changing the connected camera, first terminate the connection by setting **[Bluetooth]** to **[Disable]** on the connected camera.

#### Note

- Pairing is not removed even when the camera is turned off. Remote operations can be performed again when the camera is turned on.

## Checking Connection Information

---

Paired remote control connection information can be checked from the camera's menu screen.

Connection information is displayed as the Bluetooth address (12-digit alphanumeric code) on the back of the remote control. For further details, refer to the Advanced User Guide for your camera.

## Deleting Connection Information

---

When changing the remote control to be paired, or when pairing again, delete the connection information in the camera's menu screen. For further details, refer to the Advanced User Guide for your camera.

# Shooting Still Photos

---

Still photo shooting can be performed by pressing the release button on the remote control.

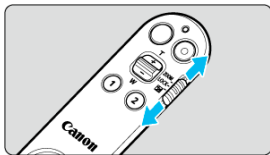
## 1. Connect the remote control to the camera.

- Connect the remote control and camera using the Bluetooth function. (✔)

## 2. Set the camera.

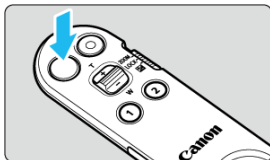
- Set the camera for still photo shooting.

## 3. Set the remote control.



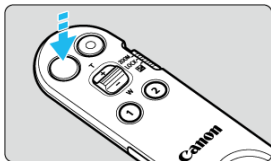
- Set the zoom/lock/exposure compensation switch to a position other than <LOCK>.

## 4. Adjust the focus.



- The release button has two steps. By gently pressing the release button to the first step, the camera automatically focuses (AF).

## 5. Take a picture.



- By firmly pressing the release button all the way down to the second step, the camera will release the shutter and take the picture.



### Note

- In movie recording mode, the release button on the remote control operates in the same way as the release button on the camera.

# Movie Recording

---

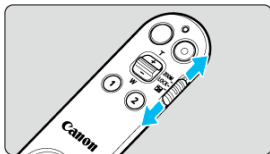
Movie recording can be performed by pressing the movie shooting button on the remote control.

---

## 1. Connect the remote control to the camera.

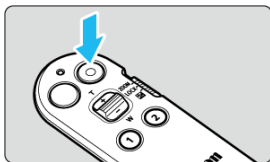
- Connect the remote control and camera using the Bluetooth function. (🔗)

## 2. Set the remote control.



- Set the zoom/lock/exposure compensation switch to a position other than <LOCK>.

## 3. Press the movie shooting button.



- The indicator on the remote control will light up once and movie recording will begin.
- Pressing the movie shooting button again will cause the indicator on the remote control to blink twice and movie recording will stop.

 Caution

- The operation sounds of the remote control may be recorded.


# Operating the Zoom

---

Zoom operations can be performed with the remote control.

---

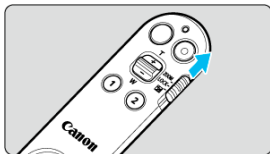
## 1. Connect the remote control to the camera.

- Connect the remote control and camera using the Bluetooth function.  
()

## 2. Set the camera.

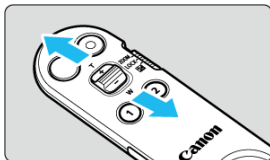
- When using a Power Zoom Adapter, set the Power Zoom Adapter.

## 3. Set the remote control.



- Set the zoom/lock/exposure compensation switch to a position other than <ZOOM>.

## 4. Operate the zoom.



- Move the zoom lever. Zoom by moving the lever to <W> for wide-angle, and moving it to <T> for telephoto.

**Note**

- The lever has two steps and depending on the camera it is possible to set optical zoom speeds to the two steps. For supported models, refer to the Canon website.
- For details on attaching a Power Zoom Adapter to the lens and details on operations, refer to the Power Zoom Adapter instruction manual.


# Setting Exposure Compensation

---

Exposure compensation can be performed with the remote control.

---

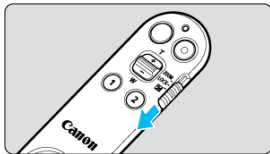
## 1. Connect the remote control to the camera.


- Connect the remote control and camera using the Bluetooth function. 

## 2. Set the camera.

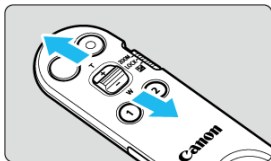
- Select a shooting mode that allows exposure compensation.

## 3. Set the remote control switch.



- Set the zoom/lock/exposure compensation switch to <  >.

#### 4. Set exposure compensation.



- Move the exposure compensation lever. Moving it to < + > will make the image brighter, and moving it towards < - > will make the image darker.
- Exposure compensation is adjusted with each individual press of the lever. Holding down the lever does not continually make adjustments to exposure compensation.

## Remote Function Buttons

---

Functions can be assigned to button <1> and button <2> respectively.  
For setup information, refer to your camera's instruction manual.

## Replacing the Battery

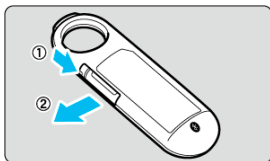
---

When the indicator on the remote control no longer lights up when a button is pressed, replace the battery. The remote control uses one CR2032 lithium coin-cell battery.

---

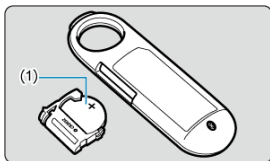
### 1. Remove the battery holder.

- Pull out the battery holder while pressing the edge of the lever with a ballpoint pen or similar.



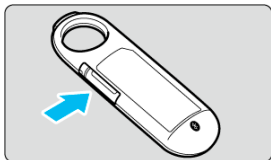
### 2. Replace the battery.

- Replace the old battery in the battery holder with a new battery.



### 3. Insert the battery holder.

- Make sure the battery holder is correctly oriented when inserting into the remote control.



## Reference

---

- [Specifications](#)
- [Trademarks and Licensing](#)

## Specifications

---

Type	Wireless Remote Control
Standard compliance	Bluetooth Specification Version 5.1 (Bluetooth low energy technology)
Transmission method	GFSK modulation
Operating distance	Approx. 5 m/16.4 ft. from the camera in any direction * With no obstructions between the remote control and camera and no radio interference with other devices
Power source	Lithium button cell battery CR2032
Dimensions (W x H x D)	Approx. 27.0 x 91.8 x 11.9 mm/1.06 x 3.61 x 0.47 in.
Weight	Approx. 14 g/0.49 oz. (Body only)
Working temperature range	0 - 40°C / 32 - 104°F
Working humidity	85% or less

- All the data above is based on Canon's testing standards.
- Product specifications and the exterior are subject to change without notice.

## Trademarks and Licensing

---

- The Bluetooth® word mark and logos are registered trademarks owned by Bluetooth SIG, Inc. and any use of such marks by Canon Inc. is under license. Other trademarks and trade names are those of their respective owners.
- All other trademarks are the property of their respective owners.

## Before Disposal

---

The battery used by the product is a valuable resource that can be recycled. Remove and recycle the button battery before you dispose of the product. When removing the button battery before disposal, be sure to read and understand the following information. Note that Canon cannot be held liable for any damage caused by handling that is contrary to the following.

### WARNING

- To avoid risks of fire, electric shock, or injury, never disassemble the product unless you are disposing of it.
- Disassembly involves removal of small parts such as screws. To prevent accidental ingestion of the small parts, disassemble the product away from children, and keep the parts out of their reach. In case of accidental ingestion, contact a doctor immediately.

#### Caution

- Dispose of used button batteries according to local regulations.

## Regulations

---

Only for European Union and EEA (Norway, Iceland and Liechtenstein) and United Kingdom



These symbols indicate that this product is not to be disposed of with your household waste, according to the WEEE Directive (2012/19/EU), the Battery Regulation ((EU) 2023/1542) and/or national legislation implementing those Directives and Regulation and the UK Waste Electrical and Electronic Equipment Regulations and the UK Batteries and Accumulators Regulations.

If a chemical symbol is printed beneath the symbol shown above, in accordance with the Battery Regulation and the UK Batteries and Accumulators Regulations, this indicates that a heavy metal (Hg = Mercury, Cd = Cadmium, Pb = Lead) is present in this battery or accumulator at a concentration above an applicable threshold specified in the Battery Regulation and the UK Batteries and Accumulators Regulations. This product should be handed over to a designated collection point, e.g., on an authorized one-for-one basis when you buy a new similar product or to an authorized collection site for recycling waste electrical and electronic equipment (EEE) and batteries and accumulators. Improper handling of this type of waste could have a possible impact on the environment and human health due to potentially hazardous substances that are generally associated with EEE. Your cooperation in the correct disposal of this product will contribute to the effective usage of natural resources. For more information about the recycling of this product, please contact your local city office, waste authority, approved scheme or your household waste disposal service or visit

[www.canon-europe.com/sustainability/approach/](http://www.canon-europe.com/sustainability/approach/).